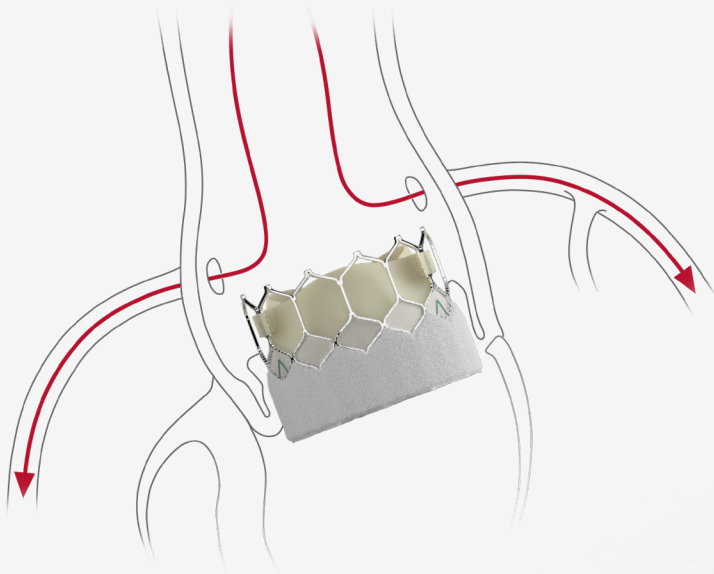


## Controlling for the future

Edwards SAPIEN 3 Ultra TAVR facilitates future coronary access



You're always thinking ahead. We can get behind that.

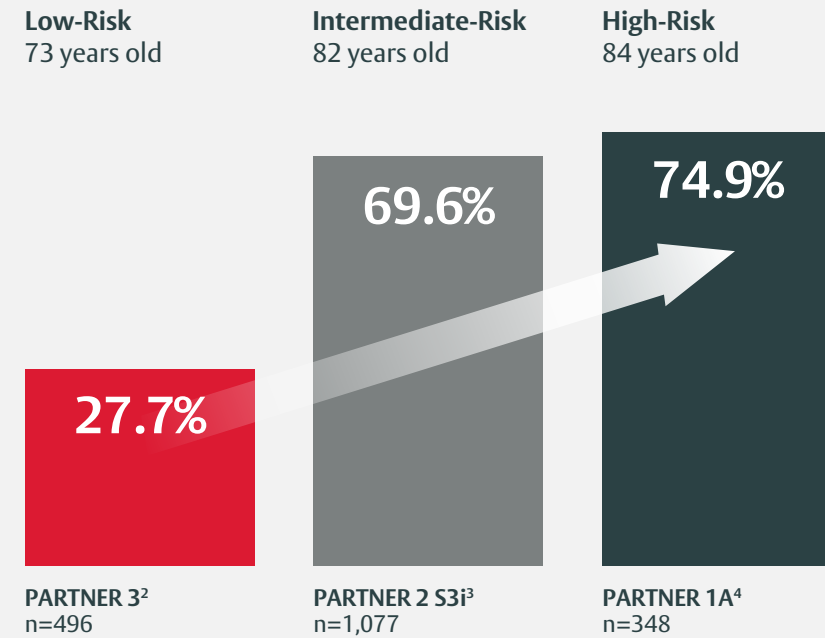


Edwards

# Your first-time valve choice today affects your patients' treatment options tomorrow.

Up to 75% of severe aortic stenosis patients are at risk of developing CAD\* requiring future coronary intervention.<sup>1</sup>

## Prevalence of CAD in TAVR patients



\*Coronary Artery Disease

Future intervention may be performed under limited TAVR experience.<sup>5</sup>

2 out of 3 PCI centers do not have a TAVR program<sup>5</sup>

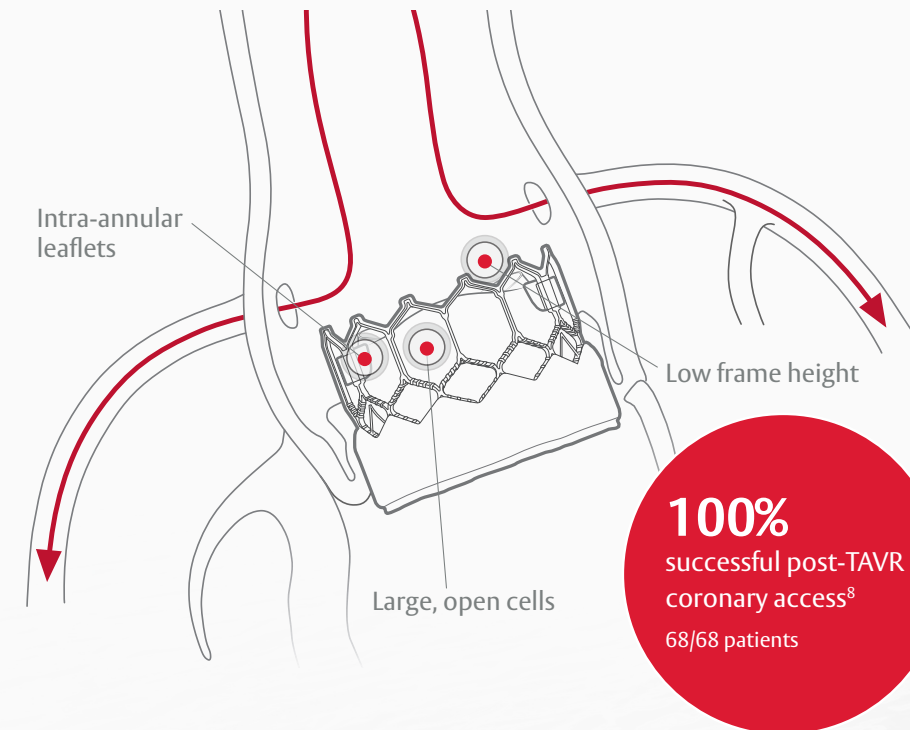


>60% of the population over the age of 65 live closer to a PCI-only center<sup>5</sup>



The design of the SAPIEN 3 valves is associated with favorable coronary access post-TAVR<sup>6</sup> and post-TAVR-in-TAVR.<sup>7</sup>

The SAPIEN 3 Ultra valve facilitates future coronary access with low frame height, intra-annular leaflets, and large open cells.



Planning for future coronary access starts with Edwards SAPIEN 3 Ultra TAVR today

# Preserve future treatment options by choosing Edwards SAPIEN 3 Ultra TAVR today. Your Higher Standard.

1. Yudi MB, Sharma SK, Tang GHL, Kini A. Coronary angiography and percutaneous coronary intervention after transcatheter aortic valve replacement. *J Am Coll Cardiol*. 2018;71(12):1360-1378.
2. Mack MJ, Leon MB, Thourani VH, et al. Transcatheter aortic-valve replacement with a balloon-expandable valve in low-risk patients. *N Engl J Med*. 2019;380(18):1695-1705.
3. Leon MB, Smith CR, Mack MJ, et al. Transcatheter or surgical aortic-valve replacement in intermediate-risk patients. *N Engl J Med*. 2016;374(17):1609-1620.
4. Leon MB, Smith CR, Mack MJ, et al. Transcatheter aortic-valve implantation for aortic stenosis in patients who cannot undergo surgery. *N Engl J Med*. 2010;363(17):1597-1607.
5. 2017 ACS Census Data, 2018 Medicare Quarterly SAF.
6. Ochiai T, Chakravarty T, Yoon SH, et al. Coronary access after TAVR. *JACC Cardiovasc Interv*. 2020;13(6):693-705.
7. De Backer O, Landes U, Fuchs A, et al. Coronary access after TAVR-in-TAVR as evaluated by multidetector computed tomography. *JACC Cardiovasc Interv*. 2020; 13(21):2528-2538.
8. Tarantini G, Fovino LN, Le Prince P, et al. Coronary access and percutaneous coronary intervention up to 3 years after transcatheter aortic valve implantation with a balloon-expandable valve. *Circ Cardiovasc Interv*. 2020;13:e008972. DOI: 10.1161/CIRCINTERVENTIONS.120.008972

**CAUTION: Federal (United States) law restricts this device to sale by or on the order of a physician.**

Edwards, Edwards Lifesciences, the stylized E logo, Edwards SAPIEN, Edwards SAPIEN 3, Edwards SAPIEN 3 Ultra, SAPIEN, SAPIEN 3, and SAPIEN 3 Ultra are trademarks of Edwards Lifesciences Corporation or its affiliates. All other trademarks are the property of their respective owners.

© 2021 Edwards Lifesciences Corporation. All rights reserved. PP--US-4357 v2.0

Edwards Lifesciences • One Edwards Way, Irvine CA 92614 USA • edwards.com



Edwards